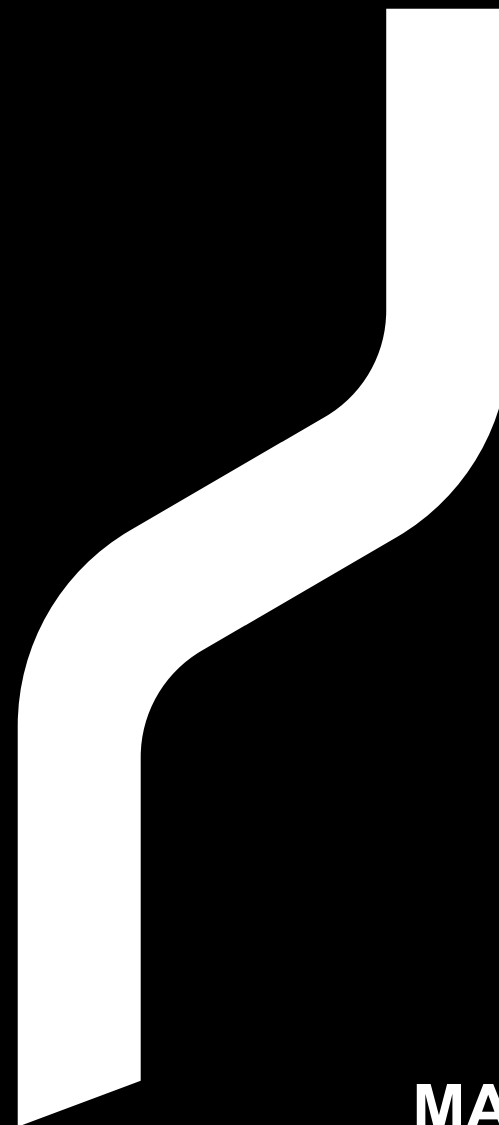


IMRITA
WHOLE HOUSE WATER FILTRATION SYSTEM



MANUAL
IMT-M2

SHENZHEN IMRITA TECHNOLOGY CO., LTD
ADD: 301,302,401,402,501,502, Building B4a, Yingzhan
Industrial Park, Longtian Community, Kengzi Subdistrict,
Pingshan New District, Shenzhen.
Tel: +86-0755-8966-9886 | Web: www.imrita.com

MADE IN CHINA

THANKS

Thanks very much for choosing IMRITA brand, and be the user of IMRITA.

Before the machine installation, we suggest you to read this manual carefully.

If you have any questions during use, please read this manual carefully or contact us directly.

Email: export10@imrita.com

Tel: +86 0755 89669886

Fax: +86 0755 8966 9907

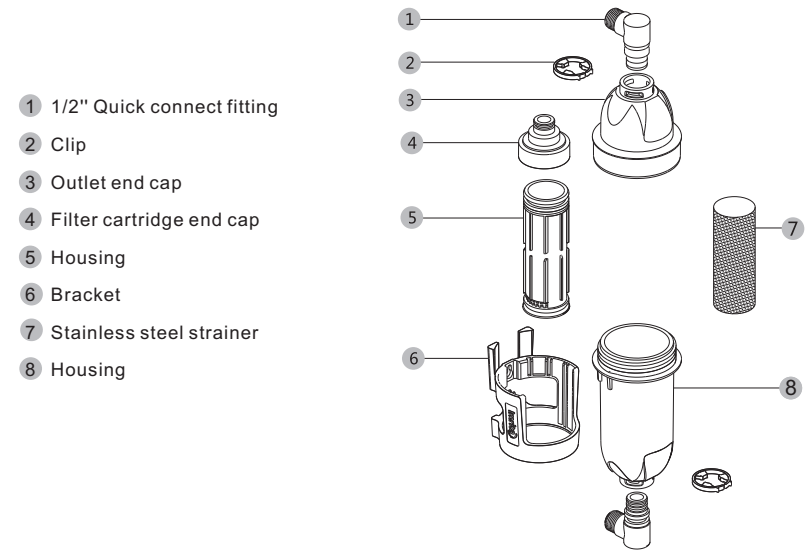
Your valuable comments on our products and services are most welcome.

TABLE OF CONTENTS

The principle of performance	1
Structure diagrams.....	1
Function & feature.....	1
Product parameter.....	2
Introduction of filter cartridge.....	2
Life service for filter cartridge.....	2
Water production principle.....	2
Back flush principle.....	3
Installation	3
Installation notice.....	3
Installation steps.....	3
Usage & maintenance	4
Notice.....	4
Strainer Cleaning.....	4
Malfunctions and Handling.....	5
Packing List.....	4

THE PRINCIPLE OF PERFORMANCE

Structure Diagrams



Pic.1 Product structure diagram

Function & Feature

Turbidity reducing and scale prevention

Stainless steel strainer can reduce the turbidity of the water, and improve the water taste in the end purification systems at the same time.

Quick connect with super pressure resistance

Water hammer dynamic pressure test, static pressure test, blasting test is higher than the industry standard.

Quick connect fitting interface is for easy installation, and tool free maintenance and replacement.

High quality plastic material with high strength, super pressure resistance.

Product Parameter

Product Name: Pre Filter	Item No.:IMT-M2
Filter type: Stainless Steel Strainer	Filtration Accuracy: 50µm
Flow Rate: 2.0m³/h	Inlet Pressure: 0.1-0.4MPa
Application: Municipal Tap Water	Temperature:5°C~38°C
Product Size: Φ87x220(mm)	

Introduction of filter cartridge

Type	Name	Specification	Material
Standard	SUS strainer	50µm	Stainless steel 304

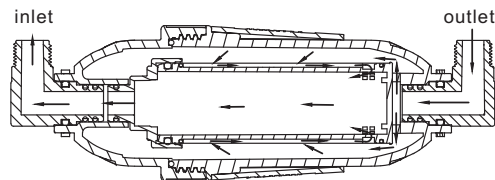
Life service for filter cartridge

With the long-term use of the water purification system, the water flow will gradually decline, please replace the filter cartridge regularly in order to ensure the water flow reaching the standard.

Type	Suggest to replace	Parts diagram
SUS Strainer	5 years	

Water production principle

When the system in water production status, the source water will first come to the outside of the strainer, then comes into its inside for filtration, to remove large particle impurities, and the filtered water will come out from the outlet.

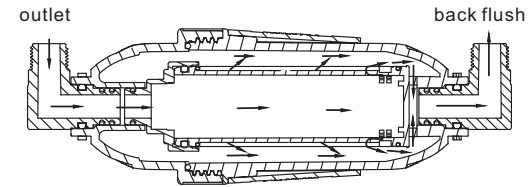


Pic. 2 Water production principle

Back flush principle

After using a period of M2 pre filter, the strainer had intercepted lots pollutants, if it didn't flush in time, it would be blocked also would cause second pollution.

Pre filter back flush: Connect the outlet with the tap water inlet, turn on the sewage valve, the pollutants from the stainless steel strainer are drained out directly from the inlet, continue 15 minutes, then turn off the sewage valve. (As shown in Pic.3).

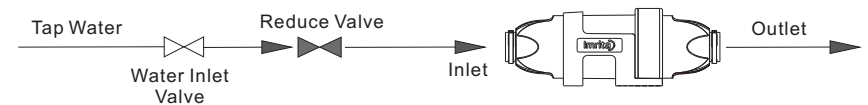


Pic.3 : Back flush principle

INSTALLATION

Installation Notice

1, If the inlet pressure is higher than 0.4Mpa for a long time, please add a reduce valve. (As shown in Pic.4)



Pic.4 reduce valve installation

2, All the pipeline, fittings, faucet which are related to water that all comply with the national standard.

3, The installation position should be protected from sun and rain to prevent aging.

Installation steps

1, Installation should be finished by professional workers; Please check whether the pre filter's accessory are complete and the pre filter whether is normal.

2, Pre filter should not to be installed outdoors, as far as possible away from ultraviolet light, heat, fuel and various chemicals, etc.

3, The end cap of pre filter is 1/2" quick connect fittings, please use with 1/2" braided hose or other corresponding fittings to series the it to the household water meter.

4, Please check it carefully after installation: whether there is any leakage in all the joints position.

USAGE & MAINTENANCE

Notice

Please pay attention to the following when daily use.

- 1, Suggest to flush when every 1000 liters water produced.
- 2, Please flush the strainer when pure water flow value is lower than standard value, drain out the pollutants to recovery the pure water flow value.
- 3, Please turn off the main water inlet valve when goes out for a long time (more than one week).
- 4, Please contact with the dealer or IMRITA when have any abnormal or doubts during using.

Strainer Cleaning

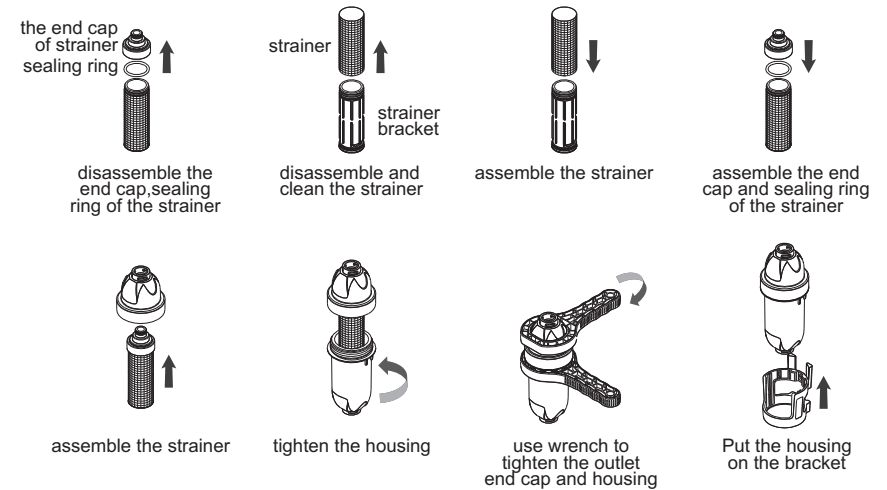
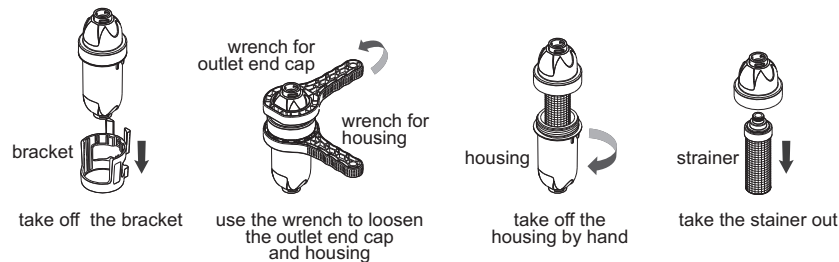
When the strainer accumulated some sticky substances or particles or it has been used for half a year, and cannot be washed clean after normal flushing, also the water output and outlet pressure of household water equipment are affected, then the strainer could be take out and cleaned it with cleaning liquid and brush (as shown in Pic.5).

Note: Do not use strong acid or strong alkaline cleaning to clean. Cleaning steps are as follows:

- 1, Disassemble the pipeline of the pre filter, take off the bracket.
- 2, Use the wrench to loosen the outlet end cap and housing, then take off the housing by hand.
- 3, Take out the strainer, disassemble the end cap, sealing ring of the strainer, and clean the impurities on the strainer with brush.
- 4, Please assemble the strainer and its parts after cleaning.
- 5, Put the strainer into the housing, then tighten the housing.
- 6, Use wrench to tighten the housing, then put it on the bracket.

Note: When using the wrench, in order to prevent scratching on the surface of housing, please insert the cloth configured with the wrench.

Suggestion: Turn on the water inlet valve for more than 3 minutes to check whether there is any leakage.



Pic.5 strainer cleaning diagram

Malfunctions and Handling

The following table is a list of possible malfunctions and their causes, please refer to their general troubleshooting methods.

Malfunction	Troubleshooting	Handling
Deep purified water does not come out	Whether the source water is shut down	Wait to recover the source water
	Whether the water inlet valve is turned on	Turn on the water inlet valve
Less purified water runs from the faucet	Whether the main water inlet valve is turned on completely	Turn on the main water inlet valve completely
	Strainer is blocked	Flushing the strainer
Leakage in the joint	The parts disassembled by self	Check whether the sealing ring falls off or is misplaced
	The parts in leakage position is loosen	Re tightened the parts
	The sealing ring in leakage position is aging or broken	Replace the sealing ring

Packing List

Pre Filter	Manual
Screws kit 2bags	clip
1/2" quick connect fittings	

