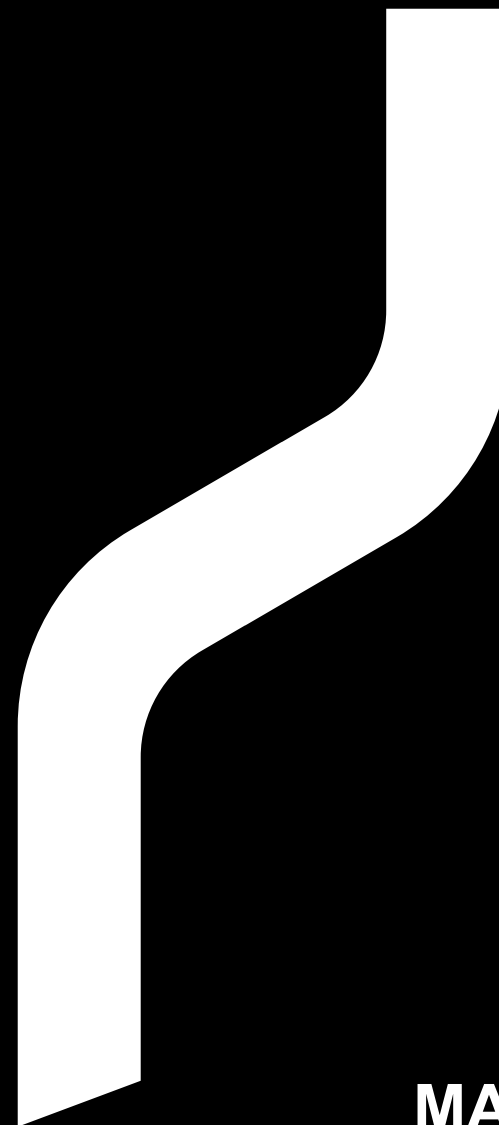


**IMRITA**  
WHOLE HOUSE WATER FILTRATION SYSTEM



**MANUAL**  
**IMT-M4 PLUS**

**SHENZHEN IMRITA TECHNOLOGY CO., LTD**  
ADD: 301,302,401,402,501,502, Building B4a, Yingzhan  
Industrial Park, Longtian Community, Kengzi Subdistrict,  
Pingshan New District, Shenzhen.  
Tel: +86-0755-8966-9886 | Web: [www.imrita.com](http://www.imrita.com)

MADE IN CHINA

## THANKS

Thanks very much for choosing IMRITA brand, and be the user of IMRITA.

Before the machine installation, we suggest you to read this manual carefully.

If you have any questions during use, please read this manual carefully or contact us directly.

Email: [export10@imrita.com](mailto:export10@imrita.com)

Tel: +86 0755 89669886

Fax: +86 0755 8966 9907

Your valuable comments on our products and services are most welcome.

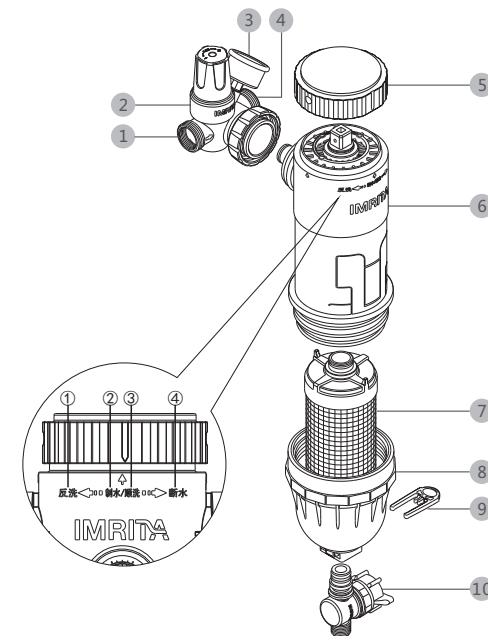
## TABLE OF CONTENTS

<b>The principle of performance</b> .....	1
Structure diagrams.....	1
Function & feature.....	1
Product parameter.....	2
Introduction of filter cartridge.....	3
Life service for filter cartridge.....	3
Water production principle.....	3
Flush principle.....	4
Back flush principle.....	4
<b>Installation</b> .....	5
Installation notice.....	5
Installation steps.....	5
<b>Usage &amp; maintenance</b> .....	7
Notice.....	7
Method.....	7
Malfunctions and Handling.....	9
<b>Packing list</b> .....	9

## THE PRINCIPLE OF PERFORMANCE

### Structure Diagrams

- ① Inlet
- ② Pressure regulator valve
- ③ Pressure gauge
- ④ Outlet
- ⑤ Waterway convert valve
- ⑥ Housing
- ⑦ Stainless steel strainer
- ⑧ End cap
- ⑨ Plug-pin
- ⑩ Flush valve



- ① Back flush
- ② Water production
- ③ Flush
- ④ Shut off

### Function & Feature



Intelligent pre filter system (hereinafter referred to as pre filter ) is a filter with the function of reducing dynamic pressure and maintaining static pressure. The factory default has been set, and the actual pressure can be visually displayed from the pressure gauge. When the water pressure exceeds the safety value, it can reduce the high water pressure and adjust the instantaneous water pressure wave by adjusting

the knob of the pressure stabilizer valve. When stop using water, the static pressure value behind the valve rises instantly, it can automatically control the water pressure not to exceed 0.4mpa to achieve the purpose of safe pressure control and avoid the risk of water leakage caused by water hammer. It is very practical for those with high water pressure and unstable water pressure.

**Remove the large particles and impurities**

Stainless steel strainer can intercept the sand,rust and other particles.

**Precisely water pressure controlling**

Through the pressure regulator valve can precisely control the water pressure, pressure reduction, pressure stabilization, high pressure protection function;

**Easy for flushing**

Turn the waterway convert valve to the flush or back flush position when flushing or back flushing.  
Just manual flush, no filter cartridge replacement.

**Easy for flushing**

Turn the waterway convert valve to the flush or back flush position when flushing or back flushing.  
Just manual flush, no filter cartridge replacement.

**Super pressure resistance,safe and reliable**

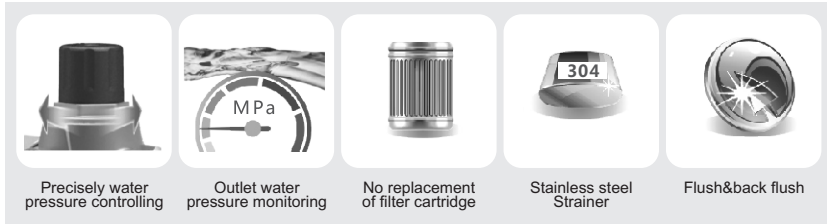
Water hammer dynamic pressure test, static pressure test, blasting test is higher than the industry standard.

**Multiple interface connection**

360° multiple mounting interface connection, easy installation.

**Pre Filter System**

**Central micro filtration system**



**Product Parameter**

Product Name: Pre Filter	Item No.: IMT-M4 plus
Filter type: Stainless Steel Strainer	Flow Rate: 6.0m³/h
Filtration Accuracy: 50µm	Inlet Pressure: 0.1-0.4MPa
Application: Municipal Tap Water	Temperature: 5°C~38°C
Product Size: 188x117x240(mm)	

**Introduction of filter cartridge**

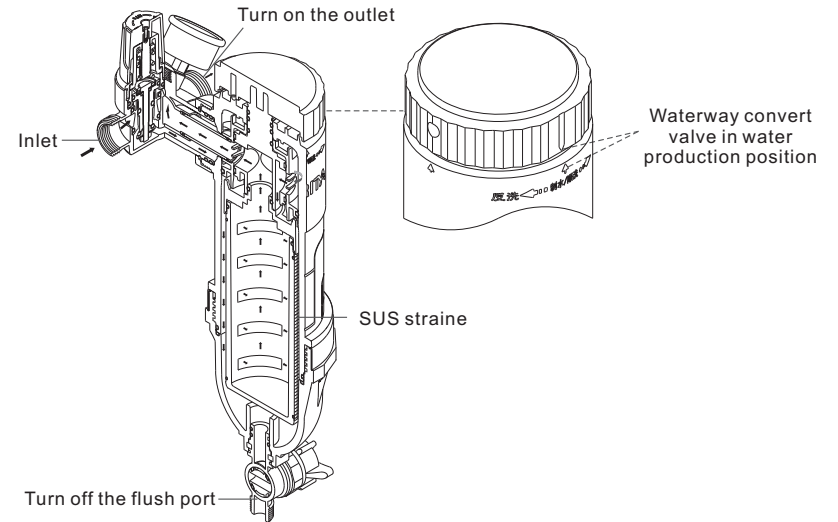
Type	Specification	Material	Qty
SUS strainer	50µm	Stainless steel 304	1 pc

**Life service for filter cartridge**

Type	Suggest to replace	Parts diagram
SUS strainer	5 years	

**Water production principle**

Turn the waterway convert valve to water production position,the pre filter is under water production,turn on the outlet,turn off the flush valve,the source water will first come to the outside of the strainer,then comes into its inside for filtration,to remove large particle impurities, and the filtered water will come out from the outlet.(As shown in pic. 1):

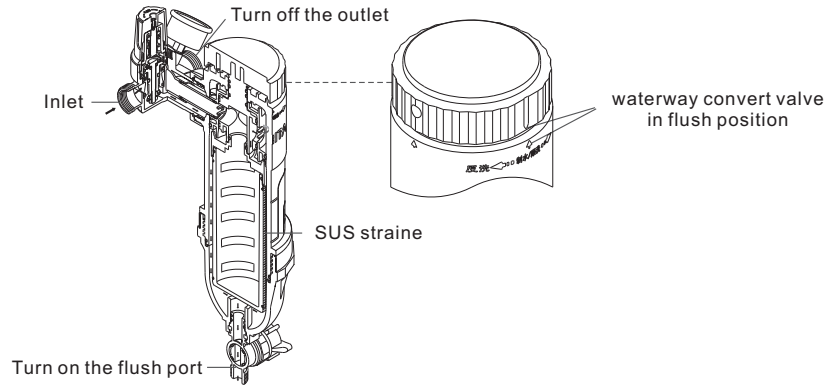


Pic. 1 water production principle

## Flush principle

After using a period of M4 plus pre filter, the strainer had intercepted lots pollutants, if it didn't flush in time, it would be blocked also would cause second pollution.

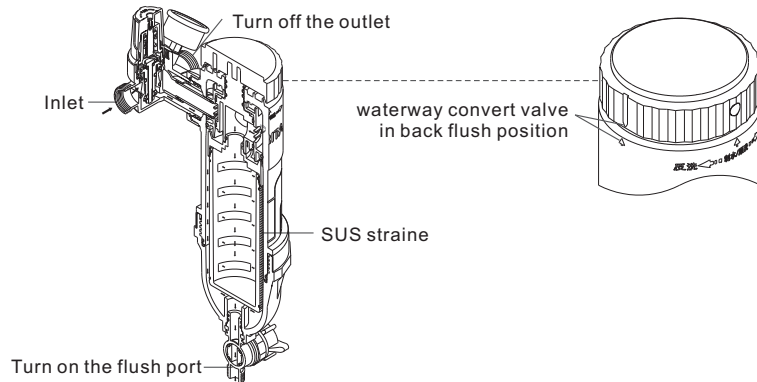
Turn the waterway convert valve to the flush position, turn on the flush port and turn off the outlet. The source water will flush off the pollutants, and will drain out from the flush port. (As shown in pic.2)



Pic.2 flush principle

## Back flush principle

Turn the waterway convert valve to the back flush position, turn on the flush port and turn off the outlet. The source water will first come to the inside of the strainer, then it will flow outside under the water pressure will first come to the outside of the strainer, then comes into its inside to remove large particle impurities, and will drain out from the flush port. (As shown in pic. 3)



Pic. 3 back flush principle

## INSTALLATION

### Installation notice

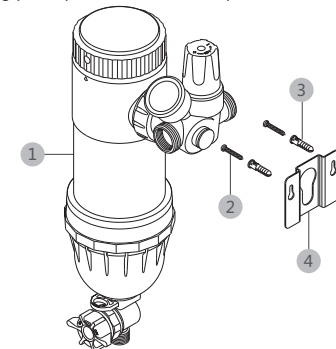
- 1, Installation should be finished by professional workers; Please check whether the pre filter's accessory are complete and the pre filter whether is normal.
- 2, The pre filter system is installed as close as possible to the floor drain so that the sewage pipe can reach into the drain.
- 3, Pre filter should not to be installed outdoors, as far as possible away from ultraviolet light, heat, fuel and various chemicals, etc.
- 4, All the pipeline, joints, faucet which are related to water are comply with the national standard.
- 5, Please check it carefully after installation: whether there is any leakage in all the joints position and the value of pressure gauge.

### Installation steps

This product is used for household water filtration and is usually installed at the household total inlet (behind the water meter). The following installation instructions use PPR pipes as an example. If household water pipes are connected using metal hard pipes, add pipes based on actual conditions.

- 1, Determining the installation position according to the products size (Reserve a distance of at least 300mm between the drainage connector and the ground. It is convenient to disassemble the transparent housing and clean the strainer, and it is more conducive to sewage discharge.), drill two holes on the wall using a hammer drill ( $\phi 6$  drill bit), insert expansion pins into the wall and knock them flat.
- 2, Align the mounting plate screw hole with the expansion pin hole, use two self-tapping screws to screw into the expansion pin hole through the mounting plate screw hole, fix the mounting plate on the wall, pay attention to screw in place.
- 3, The pre filter is fixed on the mounting plate (as shown in Pic.4).

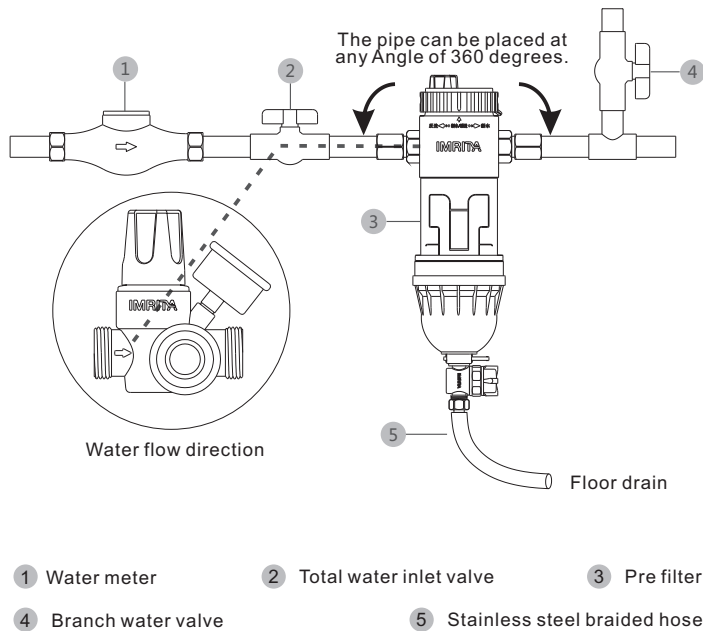
- 1 M4 plus pre filter
- 2 Self-tapping screw
- 3 Expansion pin
- 4 Mounting plate



Pic.4 diagram of pre filter fixing

## Pipeline installation

- 1, Turn off the total water inlet valve, and turn on the outlet to discharge the remaining water in system.
  - 2, Connect one end of PPR pipe with the total water inlet valve by welding; Insert the random 1/2" or 3/8" inch outer connector into the 1 inch nut, connect the other end of the PPR pipe to the 1/2" or 3/8" inch outer connector, place the 1 inch gasket, and screw the 1 inch nut into the inlet of the pre filter.
  - 3, Welding the one end of PPR pipe with branch water valve; Insert the random 1/2" or 3/8" inch outer connector into the 1 inch nut, connect the other end of the PPR pipe to the 1/2" or 3/8" inch outer connector, place the 1 inch gasket, and screw the 1 inch nut into the outlet of the pre filter.
- Note: The direction of water flow is consistent with the direction of the arrow on the product; The pipe can be placed at any Angle of 360 degrees.**
- 4, Connect the stainless steel braided hose with the flush port.
  - 5, Turn on the total water inlet valve slowly, the source water will flow to all the equipment through the pre filter; Turn on the household equipment outlet valve, water flows out and then turn off all the outlet. Pay attention to the press gauge and other joints connection where have any leakage. Suggest to produce water for 10 minutes to check there is any leakage after installation. (As shown in Pic.5)



Pic.5 pipeline installation diagram

## Usage & Maintenance

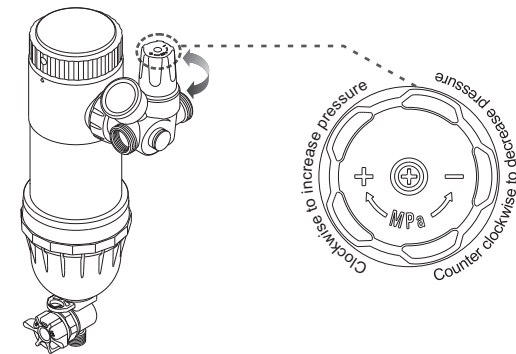
### Notice

1. This product is suitable for municipal tap water. It is strictly prohibited to be used in freezing or water temperature higher than 38°C.
2. Please flush the strainer when pure water flow value is lower than standard value, drain out the pollutants to recovery the pure water flow value.
3. Please turn off the main water inlet valve or turn the waterway convert valve to "SHUT OFF" position when goes out for a long time (more than one week).
4. Please turn on the flush valve for flushing after stop using for two days. Then turn off the flush valve to come into water production status.
5. Please contact with the dealer or IMRITA when have any abnormal or doubts during using.

### Method

Turn on the total water inlet valve after installation, the pre filter began to work properly and can view the water pressure, when the water pressure too low or too high, professional installation personnel adjusts pressure regulator valve to discharge pressure within the normal range (0.1-0.4 MPa). The intercepted impurities also can be seen through the transparent housing after using a period of time, and need to flush the accumulated impurities which affect the water output and outlet pressure of the home water equipment.

1. When the source water pressure is too high or too low or when turns on the household faucet or other water equipment, the water pressure can be adjusted by adjusting the pressure regulator valve of the pre filter. Turn on the flush valve for flushing 3-5 seconds then turn it off. The pressure gauge shows the current water pressure. Clockwise rotate the pressure regulator valve to increase the outlet water pressure, counter clockwise rotate the pressure regulator valve to decrease the outlet water pressure. (As shown in Pic. 6)



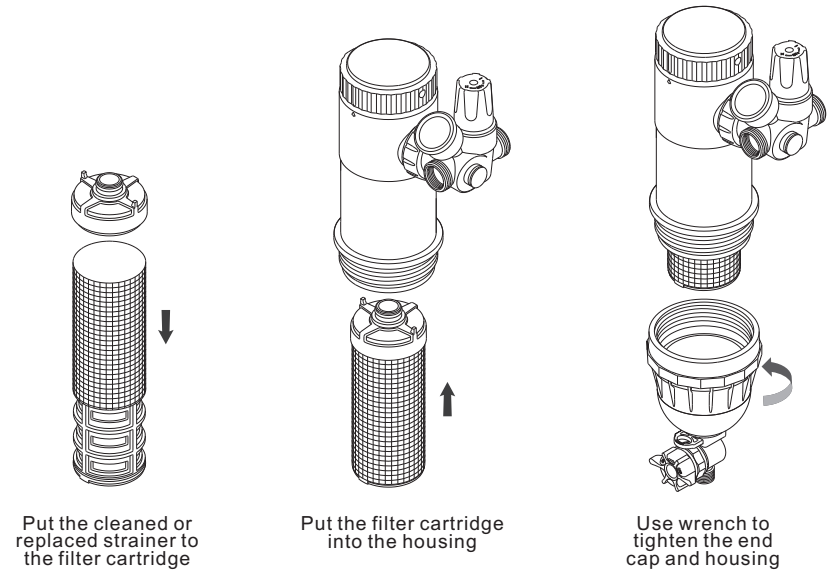
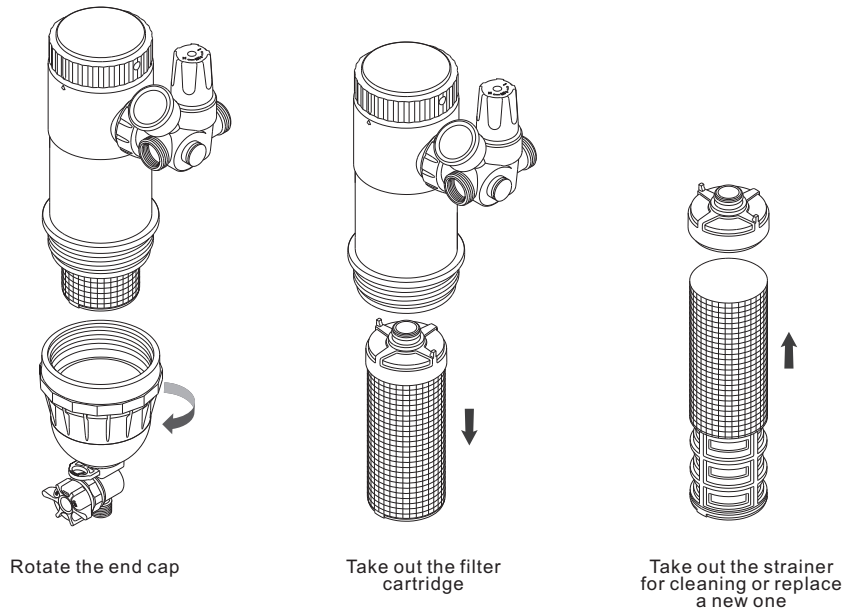
Pic.6 pressure regulator valve

2,When the strainer accumulated some sticky substances or particles or it has been used for half a year, and cannot be washed clean after normal flushing,also the water output and outlet pressure of household water equipment are affected,then the strainer could be take out and cleaned it with cleaning liquid and brush(as shown in Pic.7)

**Note: Do not use strong acid or strong alkaline when cleaning.**

- 1,Turn off the total water inlet valve, or turn the waterway convert valve to the "SHUT OFF" position
- 2,Rotate the end cap with a wrench.
- 3,Take out the filter cartridge.
- 4,Take out the stainless steel strainer,and use the brush to clean the impurities. Or replace a new one if needed.
- 5,Put the cleaned or replaced filter cartridge into the housing.
- 6, Use wrench to tighten the end cap and housing.

**Suggestion: Turn on the water inlet valve for more than 3 minutes to check whether there is any leakage.**



Pic.7 : the strainer cleaning & replacement diagram

## Malfunctions and Handling

The following table is a list of possible malfunctions and their causes, please refer to their general troubleshooting methods.

Malfunction	Troubleshooting	Handling
Pressure values are not displayed	The pressure gauge is broken	Replace the pressure gauge
Deep purified water does not come out	Whether the source water is shut down	Wait to recover the source water
	Whether the water inlet valve is turned on	Turn on the water inlet valve
Less purified water runs from the faucet	Whether the total water inlet valve is turned on completely	Turn on the total water inlet valve completely
	Strainer is blocked	Cleaning the strainer
Leakage in the joint	The parts disassembled by self	Check whether the sealing ring falls off or is misplaced
	The parts in leakage position is loosen	Re tightened the parts
	The sealing ring in leakage position is aging or broken	Replace the sealing ring
Leakage in the joint of pressure gauge	The sealing spacer in pressure gauge is aging or broken	Replace the sealing spacer
The pressure regulator valve is unstable	The sealing space in pressure regulator is aging or broken	Replace the sealing space

## PACKING LIST

Pre filter	½" quick connect flush valve
Manual	Certificate
Screws kit	G 1" nut
Sealing spacer	¾" connector
Mounting plate	