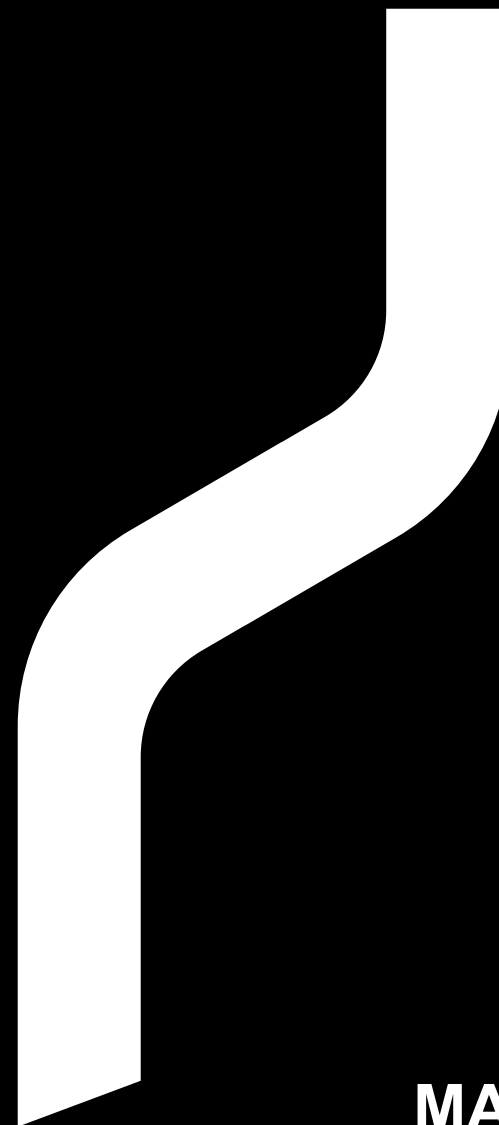


**IMRITA**  
WHOLE HOUSE WATER FILTRATION SYSTEM



**SHENZHEN IMRITA TECHNOLOGY CO., LTD**  
ADD: 301,302,401,402,501,502, Building B4a, Yingzhan  
Industrial Park, Longtian Community, Kengzi Subdistrict,  
Pingshan New District, Shenzhen.  
Tel: +86-0755-8966-9886 | Web: [www.imrita.com](http://www.imrita.com)

MADE IN CHINA

**MANUAL**  
**IMT-NS6**

## THANKS

Thanks very much for choosing IMRITA brand, and be the user of IMRITA.

Before the machine installation, we suggest you to read this manual carefully.

If you have any questions during use, please read this manual carefully or contact us directly.

Email: [export10@imrita.com](mailto:export10@imrita.com)

Tel: +86 0755 89669886

Fax: +86 0755 8966 9907

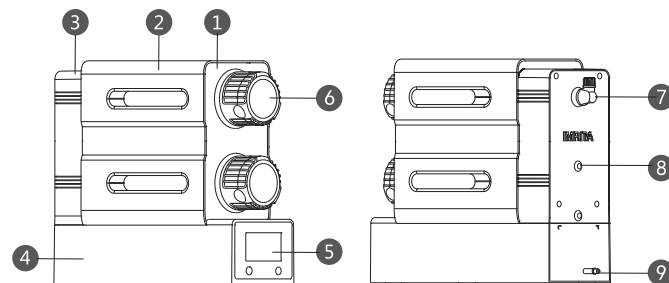
Your valuable comments on our products and services are most welcome.

## TABLE OF CONTENTS

<b>The principle of performance</b> .....	1
Structure diagrams.....	1
Function & feature.....	1
Pipeline Installation Diagrams.....	2
Electrical diagrams.....	2
Product parameter.....	3
Introduction of filter cartridge.....	3
Period of filter cartridge replacement.....	3
<b>Installation instruction</b> .....	4
Installation notice.....	4
Installation steps.....	4
<b>How to use</b> .....	6
Function.....	6
Filter Cartridge Replacement.....	7
<b>Routine maintenance</b> .....	9
<b>Malfunctions and handling</b> .....	9
<b>Packing list</b> .....	9

## THE PRINCIPLE OF PERFORMANCE

### Structure Diagrams



- |                            |                      |                    |
|----------------------------|----------------------|--------------------|
| ① Filter cartridge bracket | ② Up cover           | ③ Back cover       |
| ④ Bottom base              | ⑤ LED display screen | ⑥ Filter cartridge |
| ⑦ Inlet                    | ⑧ Outlet             | ⑨ Power line       |

### Function & Feature

#### **Pure water with sweet taste.**

---Reverse osmosis membrane filtration technology, high filtration accuracy up to 0.0001 micron, removes the scale, sediment, rust, colloid, bacteria and other harmful substances in water.

---Deep adsorption activated carbon that can remove the organic compounds and chlorine in water.

#### **Large water flow with tank-less design, filtration while drinking, taste more better.**

---Large water flow to avoid second pollution.

#### **Ultra quiet design, free from noise**

---Double spring damping structure to avoid noise problem

#### **LED display screen to show the service life of filter cartridge**

---LED display screen to see the working status at any time

#### **Integrated waterway to avoid any water leakage**

---Integrated waterway design to avoid leakage risks.

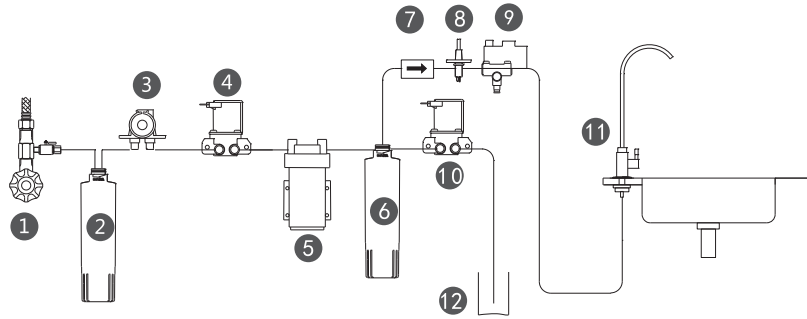
--- Auto water cut off when replace the filter cartridge

#### **Integrated filter cartridge for easy replacement**

---Quick connect integrated filter cartridge, simple and fast.

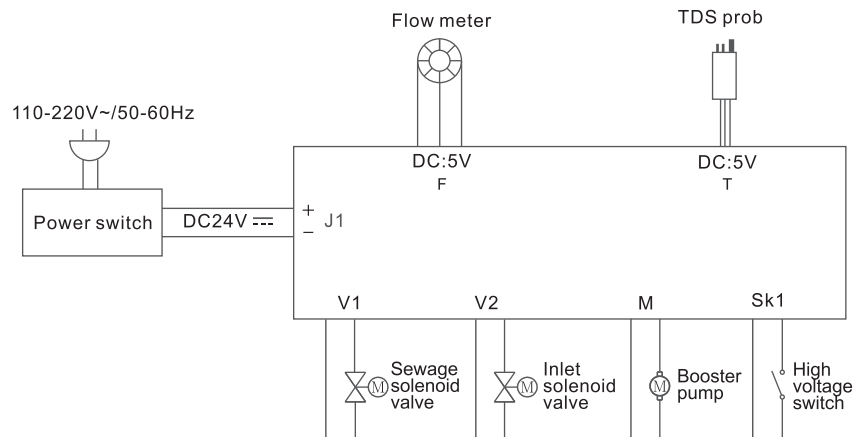
---Filter cartridge self-locking structure, the lock will be more and more tight under water pressure, to avoid the risk of loosen and leakage.

## Pipeline Installation Diagrams



- |                         |                                  |                       |
|-------------------------|----------------------------------|-----------------------|
| ① 1/2 angle valve       | ② PPC composite filter cartridge | ③ Flow meter          |
| ④ Inlet solenoid valve  | ⑤ Booster pump                   | ⑥ RO membrane         |
| ⑦ Check valve           | ⑧ TDS probe                      | ⑨ High voltage switch |
| ⑩ Sewage solenoid valve | ⑪ Purified water faucet          | ⑫ Floor drain         |

## Electrical diagrams



## Product Parameter

Product name: Reverse Osmosis Water Purifier	Item No.: IMT-NS6
Filter Type: PPC+RO	Filtration Accuracy: 0.0001μm
Flow Rate: 2.1L/min	Inlet Pressure: 0.1-0.4MPa
Temperature: 5°C-38°C	Application: Municipal Tap Water
Rated Power: 120W	Voltage/Frequency: 110-220V~50/60Hz
Anti Electric Shock Type: III	Product Size: 491x170x407(mm)

## Introduction of filter cartridge

Filter Type	PPC Filter Cartridge	RO
Filtration Accuracy	5~10μm	0.0001μm
Material	PPC	RO Membrane
Qty	1pc	1pc
Function	Remove the sand, rust and other large particles. also remove the residual chlorine and off odor, and improve the water taste.	Remove heavy metal ion, bacteria, scale, etc. safe and environmental.

## Period of filter cartridge replacement

Filter Type	PPC Filter Cartridge	RO membrane
Suggest to replacement	6-12 months	12-24 months

1, The period of replacement is recommended. Please replace the filter cartridge according to the local water quality.

2, Please replace the filter cartridge when have the following situation:

1) The outlet water quality becomes worse or the water flow decreases, also the filter cartridge clogging.

2) LED display remind to replace the filter cartridge when the filter cartridge expires.

3,When the water purifier is installed under the following water conditions, the replacement of the filter cartridge may be more frequent. It is suggested to add pre treatment scheme.

The source water is surface water source,like some local small rivers,etc.

In the third and fourth level markets, the source water maybe not disinfected or sterilized, such as collective water supply in villages.

The source water is shallow groundwater,such as rural well water.

The source water comes from the water tower,such as some open air water tower in newly built community.

## INSTALLATION INSTRUCTION

### Installation Notice

1, Please check whether the package of the water purifier is in good condition,also check whether the parts of the water purifier system are complete according to the packing list.

2,To determine the installation location

1) Please check the distance from the installation position to the power switch which should match the length of the power line.

2) Please check the surface or floor has sufficient conditions to support the weight of the water purification system.

3) Please check whether it has the good drainage facilities near the installation site.

3,Suggest to install an UF water purifier to prolong the service life of PPC and RO membrane.

4,Do not install the water purifier in the open air where the temperature is too high or too low, so as to affect the purification effect of the filter cartridge or damage the water purifier.

5,Installation tools: adjustable wrench,special wrench,etc.

6,Installation accessories: PE tubing,etc.

### Installation Steps

1,Turn off the inlet: make sure the water source inlet has been turned off.

2, Install the water faucet

1) Please use the electric drill to perforate a hole,the diameter is 30mm.if there is a hole in the sink,please ignore this step.

2) Please fix the faucet to the hole.

3,Pipeline connection

1) Take off the plug of the inlet,flush port,outlet,sewage.

.4.

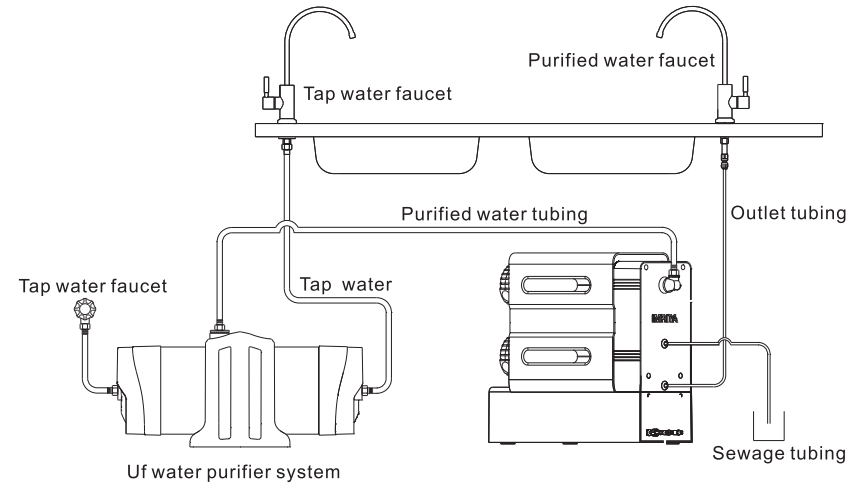
2) Use the stainless steel braided hose to connect the inlet valve with the water purifier's "INLET".

3) Use the 1/4" PE tubing to connect the water faucet with water purifier's "INLET"shows in the follow pic.

Use the 1/4" PE tubing to connect the water purifier's "SEWAGE" with the floor drain.

pic. pipeline installation diagram

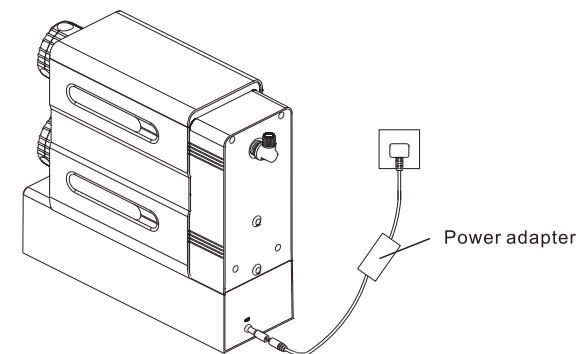
**Tips:Suggest to install an UF water purifier to prolong the service life of PPC and RO membrane.**



P ic. 1 pipeline installation diagram

4,Power adapter connection

Connect the power adapter with the power socket,and also insert the power adapter DC to the "POWER" port on the machine.



pic.2 power adapter connection

.5.

## 5,Rinsing

Check whether all the pipeline connection is correct after installation.

Please flush the machine before first use according to the following steps;

Purified water flushing: turn on the outlet water faucet, connect with the power supply, the water purifier will flush automatically; It will come into water production status after flushing, and will last along about 20 minutes for water production,then drains out.

In order to make the drinking water taste better, after the automatic rinsing of the first using machine is completed, it is recommended to flush the machine manually several times to fully ensure the taste. The steps are as follows:

- 1) Turn off the outlet water faucet, the machine in standby mode, press &hole "SET" 3 seconds to start manual flush,continuous flushing more than 10 times;
- 2) Turn on the outlet water faucet for water production 20 minutes, then drains out.
- 3) Turn off the outlet water faucet, rinse again the machine after 12 hours.
- 4) Turn on the outlet water faucet for water production 20 minutes, then drains out. Repeat the above operation for more than 4 times.

### ⚠ Notice:

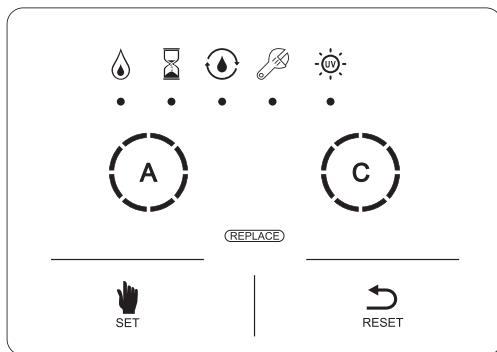
In the following cases, it is recommended to rinse according to first using status of the machine.

- 1) The machine has been unused for more than 1 months.
- 2) The machine has been continuous used for more than 3 months.
- 3) After filter cartridge replacement.

## HOW TO USE

### Function

LED Display Screen Operation



pic. 5 LED display screen

### 1,rinse function

The LED display screen will light up when the machine connects with the power supply; It will shows full circle of the Letter A,B,which indicates the service life of filter cartridge; "⌚" lights up,then the machine comes into rinsing status,and will turns into corresponding working status after flushing 180 seconds; The LED display screen will light off automatically when there is no operation within 15 seconds.

### 2,water production & standby mode function

After flushing finished, turn on the outlet water faucet, the machine turns into water production status,"💧"lights up; Turn off the outlet water faucet,"⌚"lights up;

### 3,manual flush function

Press "SET" for 3 seconds when the machine does not in water production status,start the manual flush function; Press "SET" again to stop manual flush when in flushing status; It is invalid when the machine in water production status.

### 4,maintenance function

When the machine detects that the booster pump has been working continuously for 6 hours without standby, it will enter into maintenance state. At the same time, the LED screen is always lighting on, and the"🔧"flashes.

## Filter Cartridge Replacement

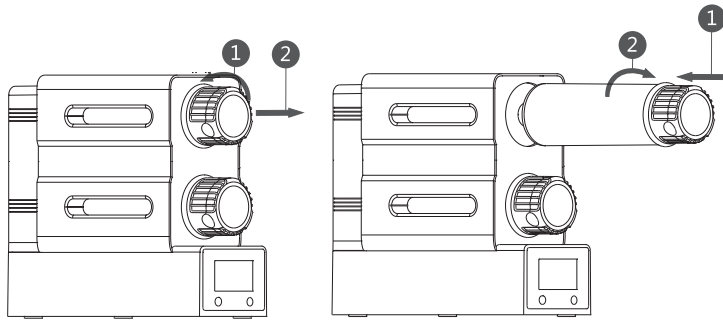
### 1, service life of filter cartridge reminder

When the water production volume reaches the rated total water production volume,the machine will remind to replace the filter cartridge automatically; LED display screen will light up, the letter which is expired will flash and need to be replaced. Dual monitoring mode of flow and use time to remind of filter replacement,when the rated flow is used up or the specified use time of the filter element is up, the alarm will be reminded.

### 2,replacement method

- 1) Turn off the tap water faucet, press "SET" 3 seconds to start manual flush for decompression.
- 2) Turn on the outlet water faucet, disconnect the power supply.
- 3) Rotate the filter cartridge 90 degrees counterclockwise.
- 4) Put the new filter cartridge into the right position, rotate it 90 degrees clockwise till it is tightened(as shown in pic.8).
- 5)Connect with the power supply,reset the machine according to above steps.

**Tips: Please put the filter cartridge into the right position when replacement; Otherwise it may cause the machine could not work normally,or even damage the machine.**



图七

图八

### 3, Filter cartridge reset

#### 1) Expired filter cartridge reset

Press "RESET" above 3 seconds, the machine automatically resets the filter cartridge which need to be replaced. The reset is successful until the Letters is with full circle and stops flashing; If two or more filters need to be RESET at the same time, press the "RESET" button for more than 3 seconds.

#### 2) Forcibly reset the unexpired filter cartridge

Press "SET" more than 3 seconds to switch to the specified filter cartridge to be forcibly RESET; Press "RESET" again for 3 seconds until the specified filter cartridge is RESET.

**Remarks: The buzzer will beep for 3 seconds when the filter cartridge is successfully RESET.**

## ROUTINE MAINTENANCE

1, Non-professional technical personnel please do not disassemble the machine without authorization.

2, Do not put the machine into the water or other liquids to avoid any damage of the machine.

3, After water or pipeline maintenance, it is necessary to discharge the sediment from other pipelines, otherwise a large amount of sediment may lead to filter cartridge block, and reduce the service life;

4, Please cut off the power supply and turn off the tap water when the machine stop using for a long time.

5, Please turn on the outlet water faucet for water production 10 minutes after stop using for a long time.

6, Do not use thinner, alcohol and others for cleaning, otherwise it may cause discoloration, deformation, etc.

.8.

7, Please check regularly whether there is water flowing out of the sewage port and whether the water flowing into the sewer is smooth when the machine is working.

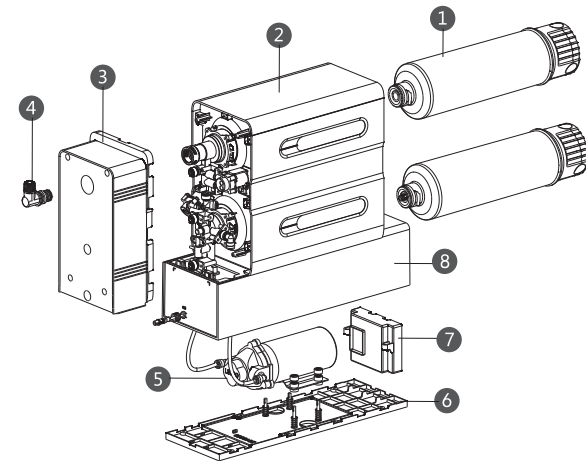
8, Please replace the filter cartridge according to its service life and the local water quality.

9, If the machine fails to work during using, please immediately close the inlet angle valve and power supply, check "

Malfunctions and Handling ", If the fault is not solved, please contact with the retailer or IMRITA.

### 10, Maintenance method

Twist off the 6 screws in the back cover, and remove it when replace the inlet solenoid valve, flow meter, check valve, high voltage switch, TDS prob and integrated waterway, etc.



- 1 Filter cartridge
- 2 Up cover
- 3 Back cover
- 4 Inlet
- 5 Pump
- 6 Bottom board
- 7 Control panel
- 8 Bottom base


## MALFUNCTIONS AND HANDLING

The following table is a list of possible malfunctions and their causes, please refer to their general troubleshooting methods.

Malfunction	Troubleshooting	Handling
Deep Purified Water Does Not Come Out	Water Supply Adaptor Turned Off	Turn On The Water Supply Adaptor
	The Filter Cartridges Are Not In The Right Position	Put The Filter Cartridge Into The Right Position
	Loosening Of Mainboard Wiring	Replug The Mainboard Wiring
	The High Voltage Switch Is Malfunctioning And Cannot Be Reset	Replace The High Voltage Switch

.9.

Malfunction	Troubleshooting	Handling
Deep Purified Water Does Not Come Out	The Booster Pump Is Burnt Out And Cannot Be Started	Replace The Booster Pump
	The Mainboard Was Burnt Out By Overflow	Replace The Mainboard
Less purified water runs from the faucet	Pe Tubing Bent Or Twisted	Do Not Bent Or Twisted The Tubing
	Water Temperature Drops Below 4°C(in Winter)	It Is Normal Phenomenon
	Tank Valved Is Not Turned On	Turn On The Tank Valve
	Water Storage Tank Is Broken	Replace The Tank
	The Filter Cartridges Have Exceeded Its Service Life	Replace The Filter Cartridge
	The Filter Cartridge Is Clogging	Flush Or Replace The Filter Cartridge
Sewage does not drain out when in water production status	Pe Tubing For Sewage Bent Or Twisted	Do Not Bent Or Twisted The Tubing
	Sewage Solenoid Valve Is Clogging	Replace The Solenoid Valve
	The Filter Cartridges Have Exceeded Its Service Life	Replace The Filter Cartridge
large sewage flow drains out when in water production status	Sewage Solenoid Valve Is Broken	Replace The Solenoid Valve
	Pcb Board Damaged Leads To The Short Circuit Of Solenoid Valve	Replace The Pcb Board
the sewage drained out all the time when system in stanby mode	Inlet Solenoid Valve Is Broken	Replace The Inlet Solenoid Valve
	Pcb Board Damaged Leads To The Short Circuit Of Solenoid Valve	Replace The Pcb Board
There is some off odor in purified water	The System Has Not Been Used For A Long Time	Flush The System Or Replace The Filter Cartridge
	The Filter Cartridges Have Exceeded Its Service Life	Replace The Filter Cartridge
The water purifier starts water production repeatedly	The High Voltage Switch Is Malfunctioning	Replace The High Voltage Switch
	Check Valve Could Not Be Closed When Pressure Releasing	Replace The Check Valve
	Pcb Board Damaged	Replace The Pcb Board
The water purifier does not stop, and the water is continuously produced when purified water faucet closed	The High Voltage Switch Is Malfunctioning	Replace The High Voltage Switch
	The Filter Cartridge Is Clogging Or Water Supply Cut Off	Replace The Filter Cartridge Or Check The Water Supply
	Water Storage Tank Is Leaked	Replace The Tank
	The Purified Water Faucet Or Feedwater Line Are Leaked	Replace The Faucet Or Feedwater Line

Malfunction	Troubleshooting	Handling
The Water Purifier Does Not Stop, and The Water Is Continuously Produced When Purified Water Faucet Closed	The Pressure Of The Booster Pump Is Insufficient	Replace The Booster Pump
	Pcb Board Damaged	Replace The Pcb Board
 Is Flashing	Pcb Board Damaged	Replace The Pcb Board
	The Purified Water Faucet Is Leaked Or Excessive Water Consumption	Replace The Faucet And Restart The System

## PACKING LIST

Water purifier	Water faucet
Stainless steel braided hose	1/4" PE tubing
Quick connector wrench	1/2" straight fitting
1/2" quick connect fitting	Power adapter
Manual	





