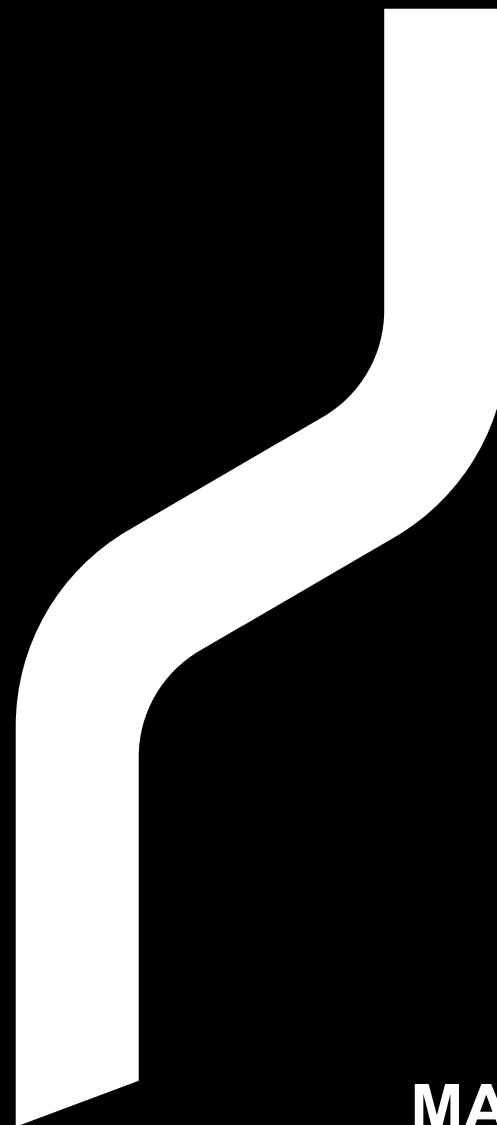


IMRITA
WHOLE HOUSE WATER FILTRATION SYSTEM



SHENZHEN IMRITA TECHNOLOGY CO., LTD

ADD: 301,302,401,402,501,502, Building B4a, Yingzhan Industrial Park, Longtian Community, Kengzi Subdistrict, Pingshan New District, Shenzhen.

Tel: +86-0755-8966-9886 | Web: www.imrita.com

MADE IN CHINA

MANUAL

IMT-V5

THANKS

Thanks very much for choosing IMRITA brand, and be the user of IMRITA.

Before the machine installation, we suggest you to read this manual carefully.

If you have any questions during use, please read this manual carefully or contact us directly.

Email: export10@imrita.com

Tel: +86 0755 89669886

Fax: +86 0755 8966 9907

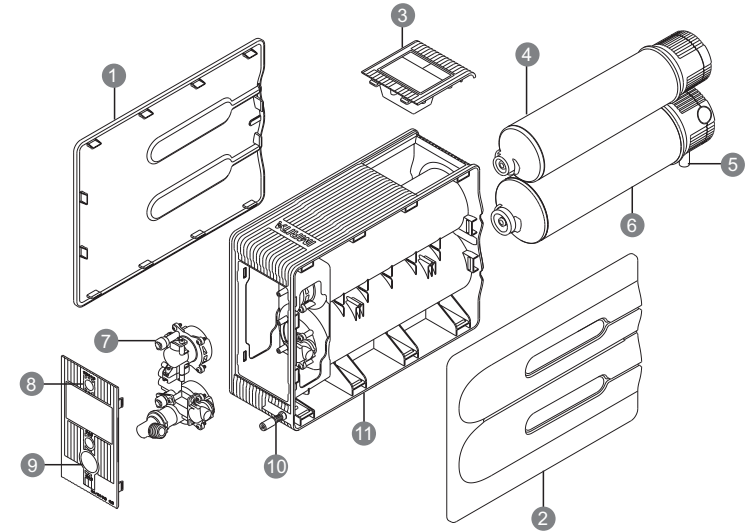
Your valuable comments on our products and services are most welcome.

TABLE OF CONTENTS

The principle of performance	1
Structure diagrams.....	1
Function & feature.....	1
Product parameter.....	2
Introduction of filter cartridge.....	2
Life service for filter cartridge.....	2
Water production principle.....	2
Back flush principle.....	3
Installation	3
Installation notice.....	3
Installation steps.....	3
Usage & maintenance	4
Notice.....	4
Strainer Cleaning.....	4
Malfunctions and Handling.....	5
Packing list	4

THE PRINCIPLE OF PERFORMANCE

Structure Diagrams



- ① Back cover ② Front cover ③ LED display screen ④ Activated carbon filter cartridge
⑤ Flush ⑥ UF membrane filter cartridge ⑦ Integrated waterway ⑧ Outlet
⑨ Inlet ⑩ Power line ⑪ Bracket

Function & Feature

Pure water with sweet taste.

1, Ultra filtration membrane, high filtration accuracy up to 0.01 micron, removes the scale, sediment, rust, colloid, bacteria and other harmful substances in water. also remains the beneficial elements and minerals in water.

2, Deep adsorption activated carbon that can remove the organic compounds and chlorine in water.

Easy replacement of filter cartridge

1, Quick connect filter cartridge, easy for replacement.

2, Water automatically cut off when the filter cartridge is unscrewed, and it can be easily replaced without turning off the water source.

Long service life for UF membrane

- 1, use with PAN material, strong antipollution ability.
- 2, The mirror film making process has high surface finish, anti-fouling and easy to flush.
- 3, Two flush modes: flush and back flush, that can intercept the surface pollutants in time and to prolong the service life of filter cartridge.

Easy for installation

- 1, Stable bracket for bottom of the water purifier, easy to place the purifier to the under sink.
 - 2, 1/2" and 1/4" quick connect fitting for PE tubing, easy for pipeline installation.
- Intelligent controlling system
- It will alarm to remind of filter cartridge replacement.

Product Parameter

Product Name: UF Water Purifier	Item No.: IMT-V5
Filter Type: UF + C	Filtration Accuracy: 0.01μm
Flow Rate: 5.0L/min	Inlet Pressure: 01-04MPa
Application: Municipal Tap Water	Temperature: 5°C-38°C
Product Size: 491x155x299(mm)	Rated Power: 1W
Voltage/Frequency: 100-240V~50/60Hz	Anti Electric Shock Type: III

Introduction of filter cartridge

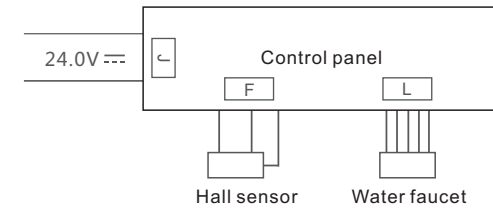
Filter Type	Filtration Accuracy	Material	Qty
UF membrane	0.01μm	PAN	1pc
Activated carbon	10-24 mesh	Activated carbon	1pc

Service life of filter cartridge

With the long-term use of the water purifier, the flow of the filter water will gradually decline. It should be replaced in a fixed period to ensure the water flow.

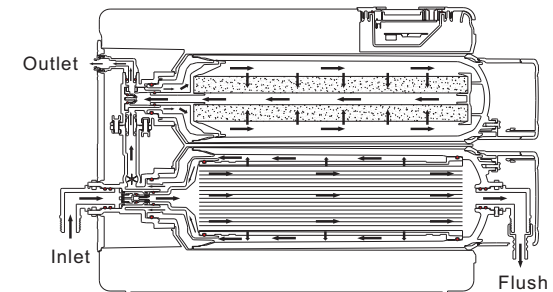
Filter Type	Suggest to replace	Parts diagrams
UF membrane	24-36 months	
Activated carbon	6-12 months	

Electrical diagrams



The principle of water production

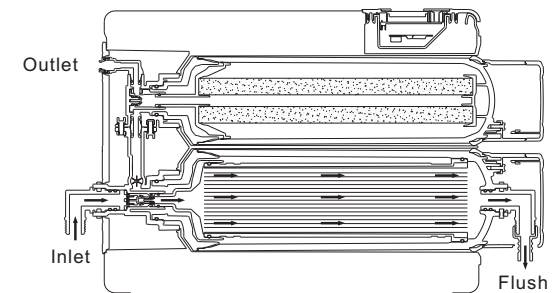
In the state of water production, the source water enters via the inlet, it flows through the UF membrane and activated carbon filter cartridge in the direction of the arrow successively, finally the purified water flows out from the outlet.



Pic.2 The principle of water production

The principle of UF membrane flushing

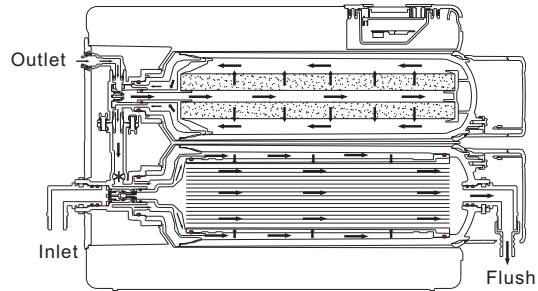
Turn on the flush faucet, and turn off the deep purified water faucet, the purifier is under flushing status, the source water enters into the UF membrane via inlet, and flushes the pollutants away, and finally drains out from the flush port.



Pic.3 The principle of UF membrane flushing

The principle of UF membrane back flushing

Turn off the inlet, and turn on the flush valve, the UF membrane is in back flush status and to make the water will enter through the outlet; In the state of back flush, the source water enters into the inner of UF membrane from outside under the water pressure, and flushes the pollutants away, and finally drains out from the flush port.



Pic.4 The principle of UF membrane back flushing

INSTALLATION INSTRUCTION

Installation Notice

- 1, In order to make the water purifier to meet your water requirements (water quality and flow), water purifier's water quality, pressure, flow, temperature should meet the requirements in the product parameters table;
- 2, All the water purifier related accessories such as pipeline, fittings, faucet should comply with ROHS standards.
- 3, Do not install outdoors to prevent freezing and cracking; At the same time, avoid directly sunlight to prevent the plastic shell from aging to fast; If it is installed outdoors, corresponding protective devices must be added.

Installation Steps

1, Water faucet installation

Please use the electric drill to perforate a hole, the diameter is 30mm. if there is a hole in the sink, please ignore this step. Fix the faucet and install the 1/4" PE tubing connector.

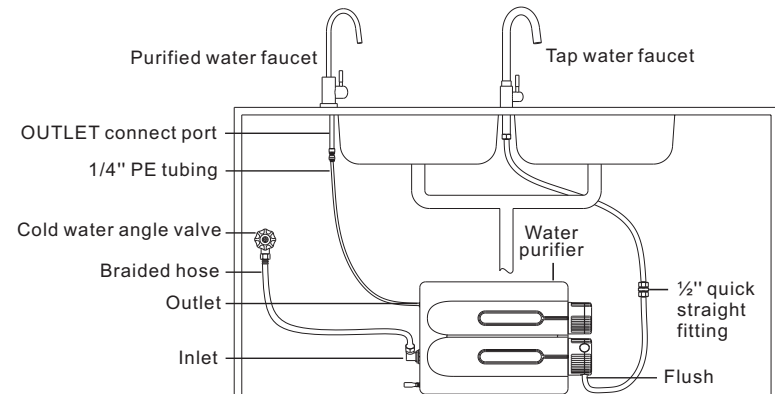
2, Pipeline connection

- 1) Pick off the end cap of INLET, FLUSH, OUTLET.
- 2) Connect one end of the stainless steel braided hose with the tap water inlet, and other end connects with the water purifier INLET.

.3.

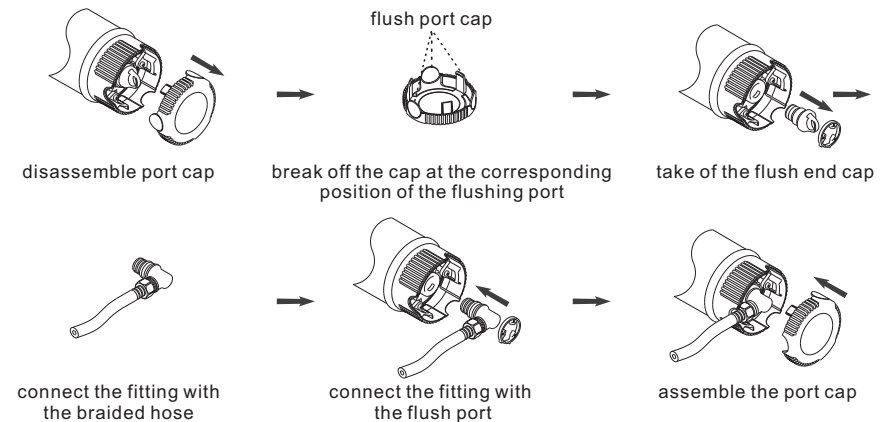
3) Use 1/4" PE tubing to connect the purified water faucet with the water purifier OUTLET.

4) Connect one end of the stainless steel braided hose with the 1/2" quick straight fitting, and other end connects with the water purifier FLUSH port. (As shown in pic.5)



Pic.5 Pipeline installation diagram

Following: Flush port fittings connection steps (as shown in Pic.6)



Pic.6 Flush port fittings connection steps

3, Leakage detecting

After the installation is completed, turn on the inlet valve to connect the tap water; Carefully check the joints, pipelines whether there is water leakage or not.

.4.

ROUTINE MAINTENANCE

First use

Please flush the water purification system according to the following system before first use.

- 1, Turn on the tap water faucet for flushing 20 minutes and then turn off. Turn on the deep purified water faucet for water production 20 minutes, and turn off faucet till the outlet water becomes clean.
- 2, Turn off the faucet and leave for 12 hours.
- 3, Turn on the deep purified water faucet for water production 20 minutes and drains out, then it can be normally use.

Daily flush

- 1, Flush the water purifier when water production reach to 20 liters; Turn on the tap water faucet, turn off the outlet faucet for flushing 30 seconds every time to pro long the service life of purifier.
- 2, Back flush to recover the pure water flow: back flush the water purifier according to Pic.4, turn on the inlet valve for back flush 1 minutes, repeat it 4-5 times.
- 3, It is more effective to turn on the faucet frequently to flush the purifier when flushing.

Usage Note

- 1, Please keep the UF membrane wet after installed, it will decline the water production rapidly and could not recover when it is not wet.
- 2, Please flush the water purifier when it has not been used for 3 days.
- 3, Turn on all tap water faucets when the tap water comes back after it stopped running. It can drain out the rust and sands, etc. Then turn on the outlet for water production.
- 4, The water production total volume is related to the water quality, if the water quality is not good, the volume will decline and also that will effect the service life of the filter cartridge.
- 5, The water production total volume also is related to the daily flushing, flush the water purifier usually that can pro long the service life of the filter cartridge.
- 6, Make sure the water inlet valve if turned off when going out for a long time (more than 2 days), that could pro long the service life of the water purifier.
- 7, The pure water flow will decline gradually after long time use of water purifier, but the purified water is still qualified.
- 8, Please turn off the water inlet valve when malfunction; Do not disassemble the water purifier by self.
- 9, If there be any doubts when using, please contact with the dealer or with IMRITA.

.5.

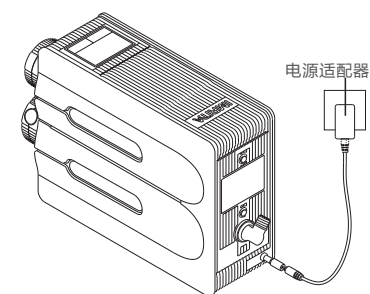
Storage Note

- 1, Keep the water purifier in a dried and well-ventilated place.
- 2, It could be sealed for 1 year before first use, if it is kept more than 1 year, that need to be sterilized and sealed once more, please contact with the dealer or IMRITA for more details.

How To Use

- 1, Connect the power adapter.

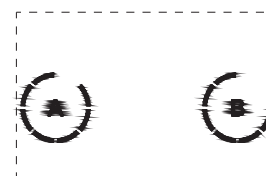
Connect the adapter with the power switch, and connect the DC end of the adapter with the water purifier power port.



Pic.7 Power adapter installation diagram

- 2, Status views

"SET" & "RESET" (As shown in Pic.8-2) - Press Any button of this two on the control panel that can active the screen (as shown in Pic.8-1). The filter cartridge indicate lights on the screen lights up with blue showing that the water purifier is under water production.



Pic.8-1: working status display diagram

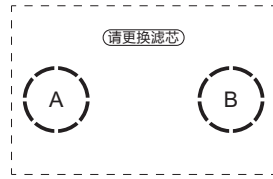


Pic.8-2: button and its function

- 3, Filter replacement

The filter cartridge indicators will flash automatically when it expired; Please replace the filter cartridge in time. (As shown in Pic.9)

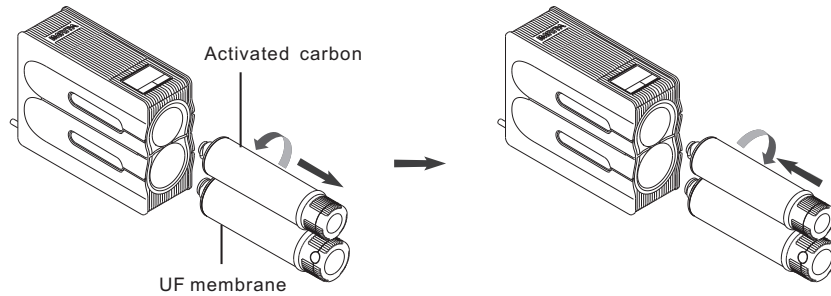
.6.



Pic.9 remind of filter cartridge replacement

4,Replacement method

- 1)Turn off the water inlet valve,contra-rotate the filter cartridge,and take out it which need to be replaced.
- 2)Put on a new filter cartridge into the right position(As shown in Pic.10);
- 3)Press the "RESET" button for resetting till the filter cartridge indicators are with full circle.



Take out the expired filter cartridge

Replace with a new filter cartridge

5,Reset the unexpired filter cartridge forcibly

Press "RESET" 3 seconds to reset the filter cartridge when it is unexpired.

Press "SET" to switch the filter cartridge that need to be reset,and the indicator flash at the same time. Then press and hold "RESET" more than 3 seconds till the filter cartridge reset.

Leakage of water purifier	End cap sealing ring is not well installed or broken	Reinstall the sealing ring or replace it
	The nut on the braided hose is not tightened or the spacer is not well installed	Reinstall the spacer and tightened the nut
Leakage in the joint	The parts disassembled by self	Check whether the sealing ring falls off or is misplaced
	The parts in leakage position is untightened	Re tightened the parts
	The sealing ring in leakage position is aging or broken	Replace the sealing ring
There is some off odor in purified water	There is heavy off odor is source water	Replace the activated carbon filter cartridge
	The system has not been used for a long time	Flush the filter cartridge
	The first flush is not thorough	Re flush according to the flush method of first use
Less purified water runs from the faucet	The inlet pressure is too low or water flow too small	Add a booster pump or increase the water flow
	The inlet temperature is too low	Wait to recover the temperature
	The source water quality is too bad or the UF membrane is blocked	Flush the filter cartridge

PACKING LIST

UF Water Purifier	Water Faucet
Manual	1/4" PE Tubing
Stainless Steel Braided Hose	Power Adapter
1/2" Quick straight fitting	1/2" Quick connect fitting

Usage Note

Malfunction	Troubleshooting	Handling
The LED display screen is not lighted up	Whether the power supply is connected or the main board is broken	Check the power supply or replace the main board
Deep purified water does not come out	Whether the source water is shut down	Wait to recover the source water
	Whether the water inlet valve is turned on	Turn on the water inlet valve

